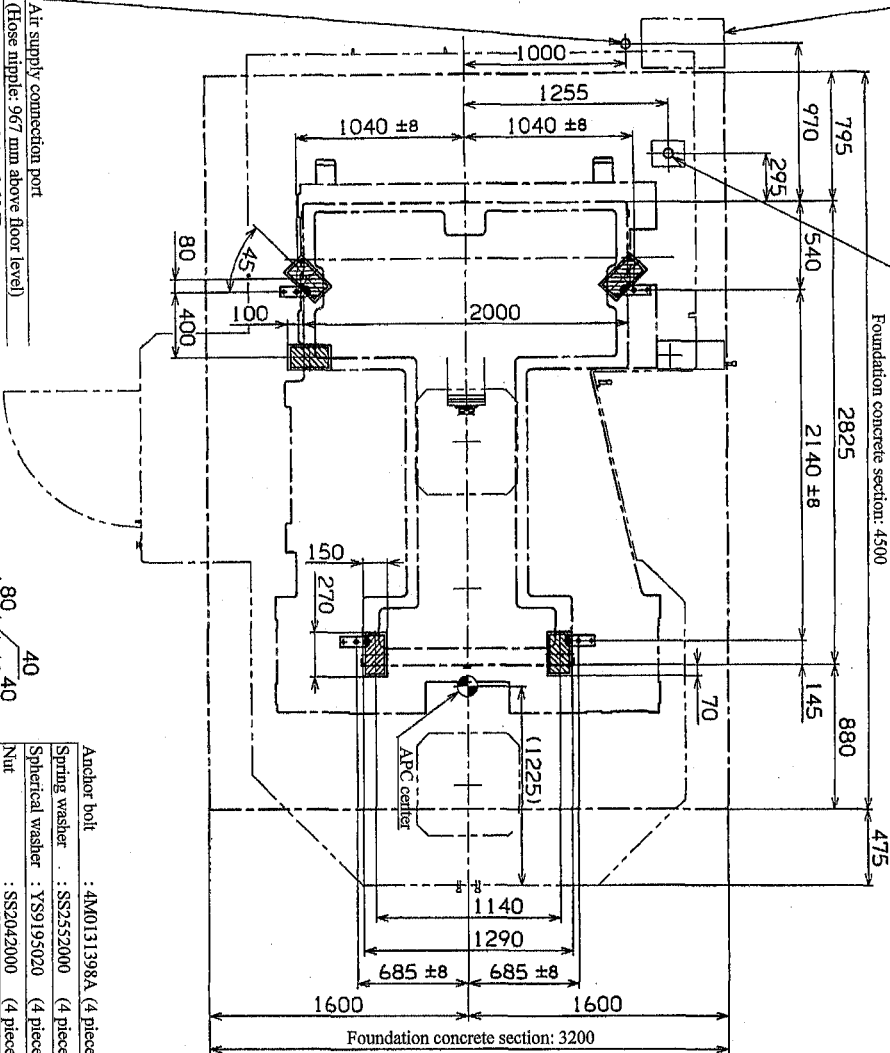
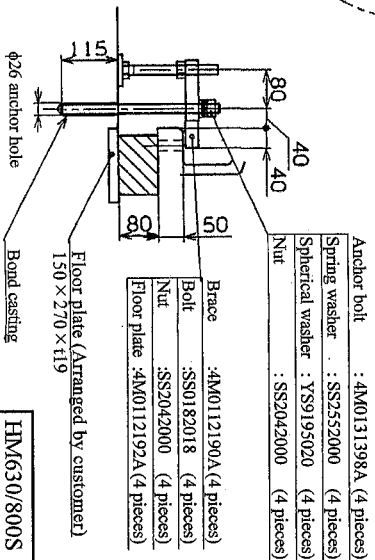


Foundation Drawing for Installation (HM630/HM800S) (Bond Anchor Specification: Option)

Power cable incoming port (Height to control box base: 945 mm)
 Power capacity: Refer to the table on the right.
 Cable size: (Equivalent to or larger than the specified size.)
 Grounding: Class D (100kV max.)
 Cable size equal to the power cable

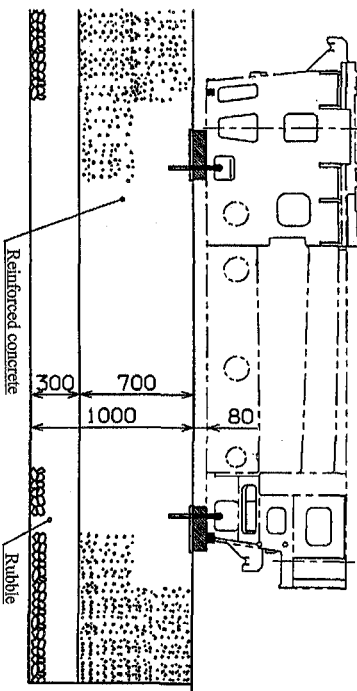


Air supply connection port
 (Hose nipple: 96.7 mm above floor level)
 Supply pressure: 0.4 to 0.6 MPa
 Capacity: 500 L/min (ANR) or larger
 Hose nipple: $\phi 12$ with Rc 1/2
 Customer should prepare and connect a hose that is compatible with the above hose nipple.



Power capacity and cable sizes (FANUC)

Machine specification	54-m/min rapid traverse rate specification	75-m/min rapid traverse rate specification (option)
12R	8R (option)	12R
Power capacity (KVA)	76	65
Cable size (mm ²)	60	80



HM630/800S
 2APC Specification

Foundation and Installation:
 To maintain machine precision and prevent vibration, pay special attention to the following:

1. The foundation should be rugged enough to maintain safety and horizontally for the machine weight according to the ground for installation place. (Nominal strength: 23 MPa Min.)
2. The foundation concrete should be reinforced with the reinforcing bar arranged as appropriate so that it may sufficiently withstand the machine weight.
3. The foundation concrete should be cured for 4 weeks.
4. When installing the machine, set leveling blocks for leveling, centering and to prevent oscillation as shown in the drawing, and adjust and secure with foundation bolts (option).
5. The ground soil bearing power required should be 0.07 MPa Min.
6. When the nature of the soil and soil bearing capacity are unfavorable, determine the pile size and number of piles accordingly for installation.
7. Drill each anchor hole in position within ± 8 mm from the reference anchor hole.
8. Avoid the anchor hole position to embed the reinforcement.
9. For the bond anchor procedure, refer to the separate "Anchor Bolt Embedding Work Procedure".

NOTE: The following board is used at the time of anchor hole processing.
 Bond E200 (Konishi Co., Ltd.)
 Required amount: 1.0 kg (Standard spec.)

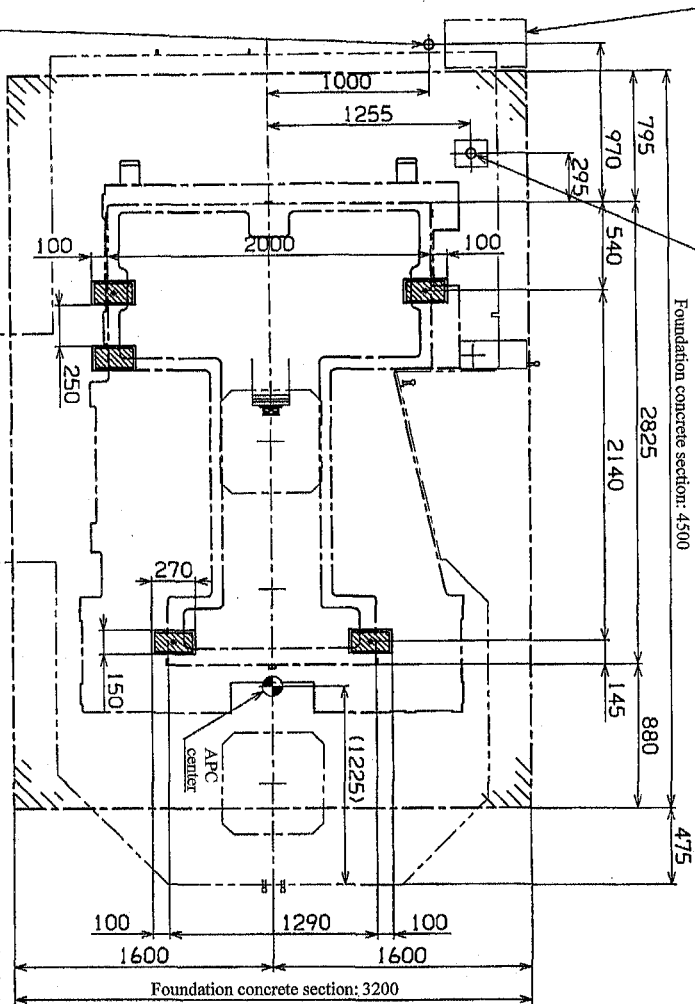
HM630/800S
 Total machine weight: 18000/18500 Kg
 Max. loadable weight of workpiece: 13000/1200 Kg per pallet

HM630/800S

Bond Anchor Specification

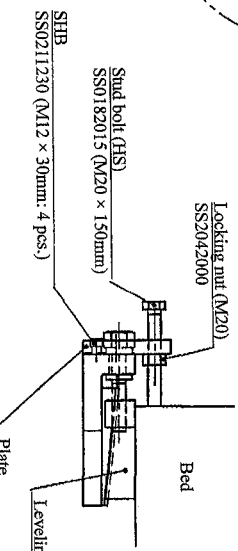
2.5 Foundation Drawing for Installation (HM630/HM800S)

Power cable incoming port (Height to control box base: 945 mm)
 Power capacity: Refer to the table on the right.
 Cable size: Refer to the table on the right.
 (Equivalent to or larger than the specified size.)
 Grounding: Class D (100A max.)
 Cable size equal to the power cable



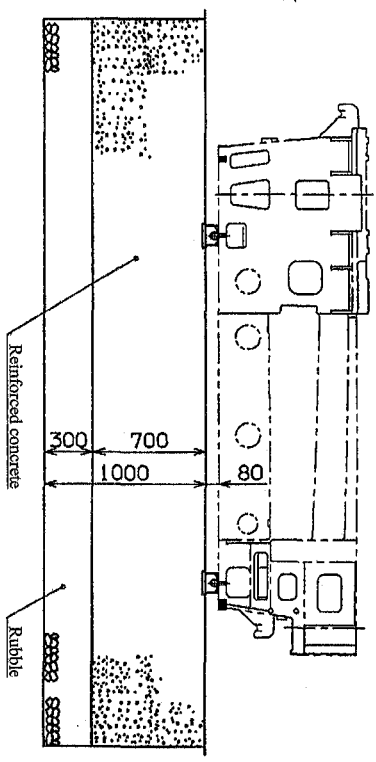
<Note > 75-m/min rapid traverse rate specification (option)
 After completion of leveling, attach a plate to each of four leveling blocks of the bed and secure it in place by lightly pushing a stud bolt (HS) to the edge of the bed. (Refer to the figure below.)

Air supply connection port
 (Hose nipple: 9/16 mm above floor level)
 Supply pressure: 0.4 to 0.6 MPa
 Capacity : 500 L/min (ANR) or larger
 Hose nipple: φ12 with Rc 1/2
 Customer should prepare and connect a hose that is compatible with the above hose nipple.



Power capacity and cable sizes (FANUC)

Machine specification	54-m/min rapid traverse rate specification		75-m/min rapid traverse rate specification (option)	
	12R	8R (option)	12R	8R (option)
Power capacity (kVA)	76	65	76	65
Cable size (mm ²)	80	60	80	60



[CAUTION]
 The foundation anchoring parts are option.

HM630/800S
 2APC Specification

Foundation and installation :

- To maintain machine precision and prevent vibration, pay special attention to the following.
1. The foundation should be rugged enough to maintain safety and horizontality for the machine weight according to the ground for installation place. (Nominal strength : 25 MPa Min.)
 2. The foundation concrete should be reinforced with the reinforcing bar arranged as appropriate so that it may sufficiently withstand the machine weight.
 3. The foundation concrete should be cured for 4 weeks.
 4. When installing the machine, set leveling blocks for leveling, centering and to prevent oscillation as shown in the drawing. Periodically check that they stay in proper position and condition.
 5. The ground soil bearing power required should be 0.07 MPa Min.
 6. When the nature of the soil and soil bearing capacity are unfavorable, determine the pile size and number of piles accordingly for installation.
 7. Foundation anchor bolts are optionally provided.
 8. Prepare five floor plates (from sheets) of the following size before starting the foundation work.
 Size: 270 mm × 150mm × 19mm

HM630/800S : 18000/18500 kg
 Total machine weight
 Max. loadable weight of workpiece : 1300/200 kg per pallet

HM630/800S	Standard	26
------------	----------	----